

Handsworth Creative
Handsworth Park Arts Trail
Artist Brief 2022
‘The Commonwealth -
here and now’



Summary

Following the successful completion of the three-year project to create the Handsworth Park Arts Trail, Handsworth Creative is pleased to announce a commission for an additional piece of public art to mark the hosting of the Commonwealth Games locally in 2022.

Over the course of three years, five pieces of public art were commissioned, and these complement other examples of public art in Handsworth Park to form a unique experience for local residents and other visitors to the park.

There is an indicative budget of between £9,000 and £12,000 for this single commission. The closing date for applications for producing a piece for 2022 is 10am Monday 24th January 2022.

Theme: ‘The Commonwealth - here and now’

The theme for 2022 is **‘The Commonwealth - here and now’**. Handsworth Creative is seeking to commission a site-specific monumental Artwork in 2022 that reflects either the Commonwealth Games, the Commonwealth or both. The Artwork should be:

- bright and visual;
- reflects the joy and pleasure people have in Handsworth Park;
- is truly interactive; and
- inspires and delights children of all ages.

The Artwork should not be considered as ‘play equipment’ and must not be capable of being climbed on and any moving parts must be out of reach. The maximum height for the Artwork is 4m, however large-scale low-level Artwork that can be safely interacted with is also welcomed. It is essential that the **materials used are durable, robust, vandal and weatherproof and suitable for the urban environment**.

Getting involved

There are two ways to directly participate in the project:

1. **Artists can apply for a paid commission** to make Artwork for permanent display in Handsworth Park with involvement from members of the local community, which may involve a participatory process to make the Artwork, or through workshops before or after the installation of the Artwork. Therefore, members of the community must be involved in some way by either creating, informing or responding to the Artwork.
2. A **school, community organisation or faith group** can apply to be involved by working with a professional artist.

Background

'**Handsworth Creative**' is a Community Interest Company operating in north Birmingham and created the **Handsworth Park Arts Trail (HPAT)** to engage communities in and around the Handsworth area to develop Artwork to be permanently exhibited in Handsworth Park (photographs and maps from page 5 onwards illustrate the Park where the Arts Trail is sited and existing Artwork). The rationale was to develop a project with an Arts and Wellbeing and Environmental focus, providing opportunities for inter-faith activity, community cohesion and the development of inter-generational relationships. This was achieved by organising creative activities that culminated in the production of five sculptures and mosaics celebrating the diversity of local communities, technically robust, aesthetically pleasing and often functional for people of all ages to enjoy in the park.

www.handsworthcreative.com/park-arts-trail

Few local residents access art exhibitions in Birmingham and this Arts Trail increases their access to Public Art, it has also made Handsworth Park a 'destination' for Public Art in the City. This project builds on the successful temporary Handsworth Park Arts Trail that was organised in 2015 and saw six pieces of art being exhibited during the summer.

Project Methodology

Handsworth Creative is seeking applications from artists and/or local community organisations to get involved in producing a sculptural /installation piece of Artwork to be installed within the Park.

One piece of artwork will be commissioned in 2022 for installation in 2022.

Applications need to demonstrate the artist's understanding of the process of designing and creating Artwork of this nature including the materials used.

The involvement of children and/or the wider community in the Artwork is important, and the Selection Panel is keen for this to be genuine and meaningful and therefore encourages this to be done in response to the Artwork, for example, through workshops, talks and visits to the Arts Trail after installation. However, Artists are free to make alternative suggestions in their application.

Community engagement is a crucial part of **Handsworth Park Arts Trail** and **Handsworth Creative** has strong partnerships with local primary schools who welcome the involvement of Artists in a variety of ways. However, applications involving other community groups, faith organisations or secondary schools are also welcome. For more details about the partnerships with local primary schools who Artists can work with please contact info@handsworthcreative.com

Handsworth Creative would like the Artwork to reflect the diversity of the area and it must be aesthetically pleasing and suitable for visitors of all ages and abilities to enjoy, it may be functional too.

The design and materials must be such that the Artwork is technically very robust, weather and vandal proof. The Selection Panel will consider these factors as the top priority when assessing applications. After submission, it is possible that the curators will contact the artist to clarify any safety and security matters of the proposed piece before the Selection Panel meets. It is expected that the Artwork should be suitable to be exhibited for a minimum of ten years.

The location of the Artwork will be informed by the nature of the piece and artists are encouraged to consider where they feel their pieces would be best suited. However, the Selection Panel will consider many factors when determining possible locations and the final decision will rest with Birmingham City Council's Parks Department. All artists and organisations will be responsible for transporting their individual piece of Artwork to the park and for its installation. Prior to installation, artists must submit a written Method Statement that must be approved by the Curators and Birmingham City Council's Parks

Department. Artists will be required to complete a risk assessment covering any risk to both the artists (installation, materials etc.) and to the public through interactions, moving parts or materials.

It is essential that artists working with children and vulnerable adults possess an up to date DBS certificate or provide evidence of subscription to the 'update service' in order to comply with safeguarding protocols. Artists will also be required to have minimum public liability insurance cover of up to £5 million. Proof of which will be required before a contract is issued to the successful applicants.

Selection of the successful applicants will be undertaken by the Selection Panel including representatives from key organisations supporting the project. Ownership of the Artwork will be with Handsworth Creative as commissioners, while copyright will remain with the commissioned artists, however both parties will have access to all publicity materials and documentation for the purposes of promoting future work and/or arts activities for all time going forward.

There is an indicative budget of between £9,000 and £12,00 for the Artwork, painting or installation, to include all artists' fees and materials and delivery to the site for installation and installation. The fee will be payable in three instalments with payment schedule to be agreed on signing of the contract. Artists are expected to contribute written and visual material for use on the website, interpretation boards and social media to aid the interpretation and appreciation of their artwork and to provide monitoring and evaluation information as requested.

Project Philosophy

The project philosophy is one of partnership with local stakeholders who are active in the Handsworth area, including commissioned artists, community organisations, faith groups, schools, the college and other local organisations.

The underpinning philosophy is *to create something with who we are* (local people), *to go into something we have and share* (the local park). Educationally there will be an opportunity to work with both young and old to explore and 'brighten up' our local environment, and as added value, the artist will be expected to work with the Curators and produce some audio-visual material and documentation to accompany the Artworks for use by local schools and via social media for general visitors.

The original **Handsworth Park Arts Trail** was created by Handsworth Creative with the full support of The Friends of Handsworth Park, Perry Barr Arts Forum and Birmingham City Council, it was funded by The Arts Council England. The successful applicant will be chosen by a **Selection Panel** including representatives from key organisations supporting the project.

Application

Please provide information summarising your idea by **10am Monday 24th January 2022**, this must include:

- 1) A short profile of the Artist and/or organisation or CV (400 words maximum)
- 2) An outline of the idea and description of the materials to be used (including an assessment of their durability and suitability for the location) and approximate dimensions plus installation requirements (400 words maximum and 1 - 6 images)
- 3) A brief summary of who will be involved (e.g. school children, local community) and how, and the method of engagement (250 words maximum)
- 4) Examples of previous work (4-6 images or website/online profile link)
- 5) Provisional Budget and how much you are seeking from Handsworth Creative (maximum £12,000)

For more information contact: info@handsworthcreative.com

To assist Handsworth Creative, please provide advance notification that you are intending to submit an application, by e-mailing info@handsworthcreative.com as soon as possible.

Handsworth Catchment Area

Handsworth Creative recognises that a wide range of local residents and local communities use Handsworth Park on a regular basis. Applications are encouraged from any artist based in any location; however, they must demonstrate how their design is relevant to Handsworth Park and how they will work with communities local to Handsworth Park and for this purpose any school, college, community organisation or faith group with a postal address within Birchfield, Handsworth, Handsworth Wood, Holyhead or Lozells wards are included. Applications directly from such organisations within these wards are equally welcomed. Handsworth Creative has strong partnerships with local primary schools who welcome the involvement of Artists. Artists are therefore welcome to make use of these arrangements.

Selection Process

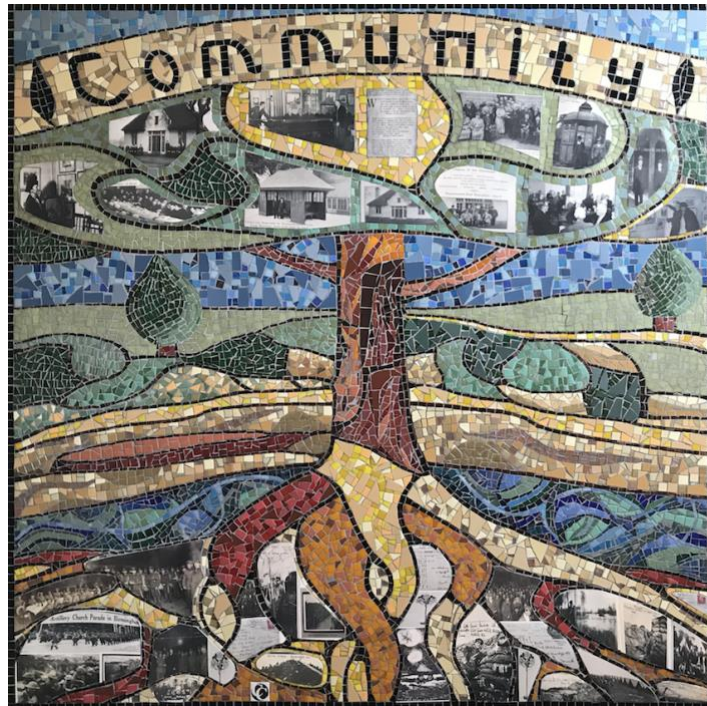
The Selection Panel's decision is final, and the Artwork will be selected on artistic merit and suitability for permanent outdoor exhibition in Handsworth Park. The engagement with local communities will also be a decision-making factor. The Panel is also keen to ensure the Arts Trail reflects a range of artistic practices and different art forms.

Project Timeline

With the exception of the deadline for submissions of applications, this is an indicative timeline and is flexible in discussion with the selected artists.

10am Monday 24th January 2022	Deadline for submissions of applications to be emailed to: info@handsworthcreative.com
Week commencing 24 th January 2022	Selection Panel meets
Week commencing 31 st January 2022	Successful Artist notified and contract issued
Monday 7 th February 2022	Engagement activity plan to be finalised and approved
Week commencing 7 th March 2022	Production of Artwork commences
Week commencing 25 th April 2022 (summer term)	Engagement activity can take place with local schools (other engagement activities are possible after installation too)
Monday 9 th May 2022	Method Statement for installation and risk assessment to be submitted and approved by Curators and Birmingham City Council's Parks Department's Health & Safety Advisor.
Friday 1 st July 2022	Artwork to be fully completed and ready for installation
Week commencing 4 th July 2022	Installation and launch (dates to be confirmed)







Handsworth Park, Holly Road, Birmingham B20 2BY

Please note the two-red demarcated areas show possible locations for the Artwork for the Handsworth Park Arts Trail.
 Handsworth Park is just over 2 miles from Alexander Stadium where the Commonwealth Games will be held.